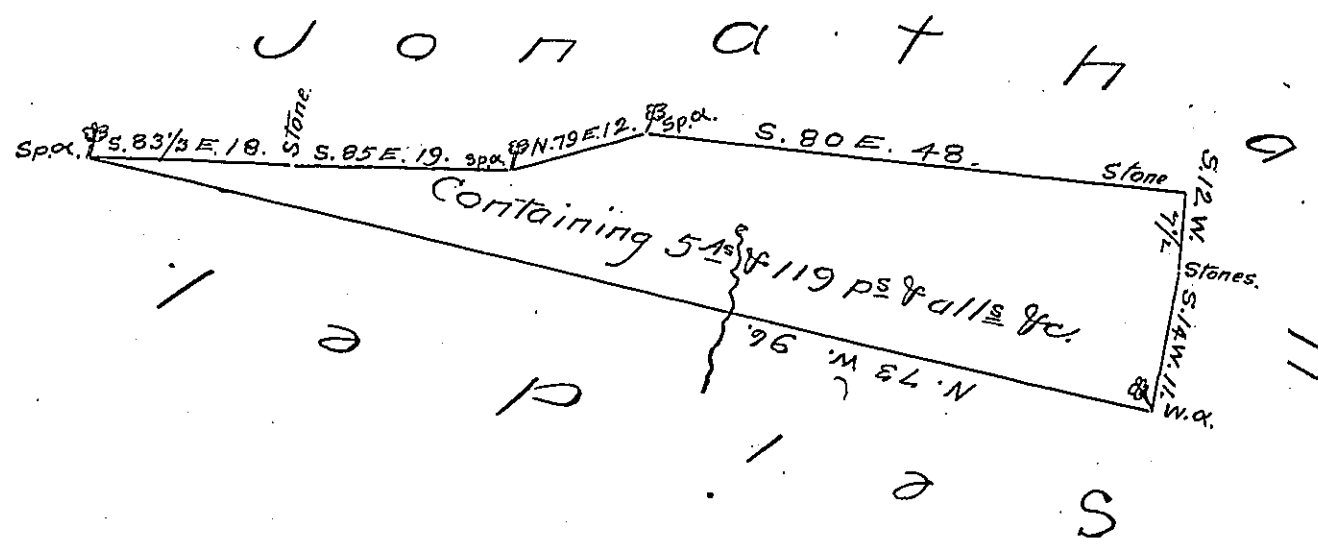


FORM NO. 1.



A Draught of the above described tract of land situate in Bethel Township Lebanon County, Surveyed the 6th day of May A. D. 1841 in pursuance of a Warrant dated the 26th day of April A. D. 1841, Granted to Jonathan Seidel, Containing five Acres and one hundred and nineteen perches and the usual allowance of 6 pr. Ct. & 1/2

To Jacob Sallade Esq. P. Wm. Rank D.S.
 Surveyor General of Pennsylvania.

IN TESTIMONY that the above is a copy of the original remaining on file in the Department of Internal Affairs of Pennsylvania, made conformably to an Act of Assembly approved the 16th day of February 1833, I have hereunto set my hand and caused the Seal of said Department to be affixed at Harrisburg, this fifth day of April 1907.

Geo. R. Brown
 Secretary of Internal Affairs.